

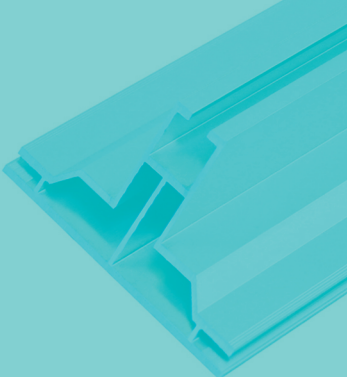
EXHIBIT BOOK.com

Make a Lasting Impression with Frames and Displays

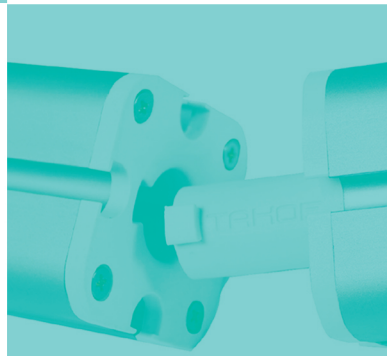
DISPLAYS



EXTRUSIONS



FRAMES



FLAGS



EZ EXTEND DISPLAYS
(pg.01)



FABRIC POP UP DISPLAYS
(pg.11)



EZ TUBE DISPLAYS
(pg.05)



CASITA CANOPY TENTS® & FLAGS
(pg.43)



TABLE THROWS
(pg.55)



RETRACTABLE BANNER STANDS
(pg.35)



ICON LEGEND

LIFETIME WARRANTY

1 YEAR WARRANTY

ADJUSTABLE
Display can adjust to accommodate a range of sizes.

ADJUSTABLE HEIGHT
Display can adjust to accommodate a range of banner heights.

INDOOR USE
Banners and stands are recommended for indoor usage.

OUTDOOR USE
Banners and stands are recommended for outdoor usage.

DOUBLE-SIDED
Displays 2 banners back-to-back to enable viewing from both sides.

SINGLE-SIDED
Displays 1 banner on front side only.

TOOLLESS SETUP
Display parts assemble together without the use of tools.

MAGNET
Magnetic strips on sides of panels attach to channel bars on frame.

HOOK & LOOP
Banners attach via hook & loop strips on top and/or bottom.

CLAMP
Top and/or bottom bars clamp to banner.

HEM
Banner edges are folded over and stitched with white thread.

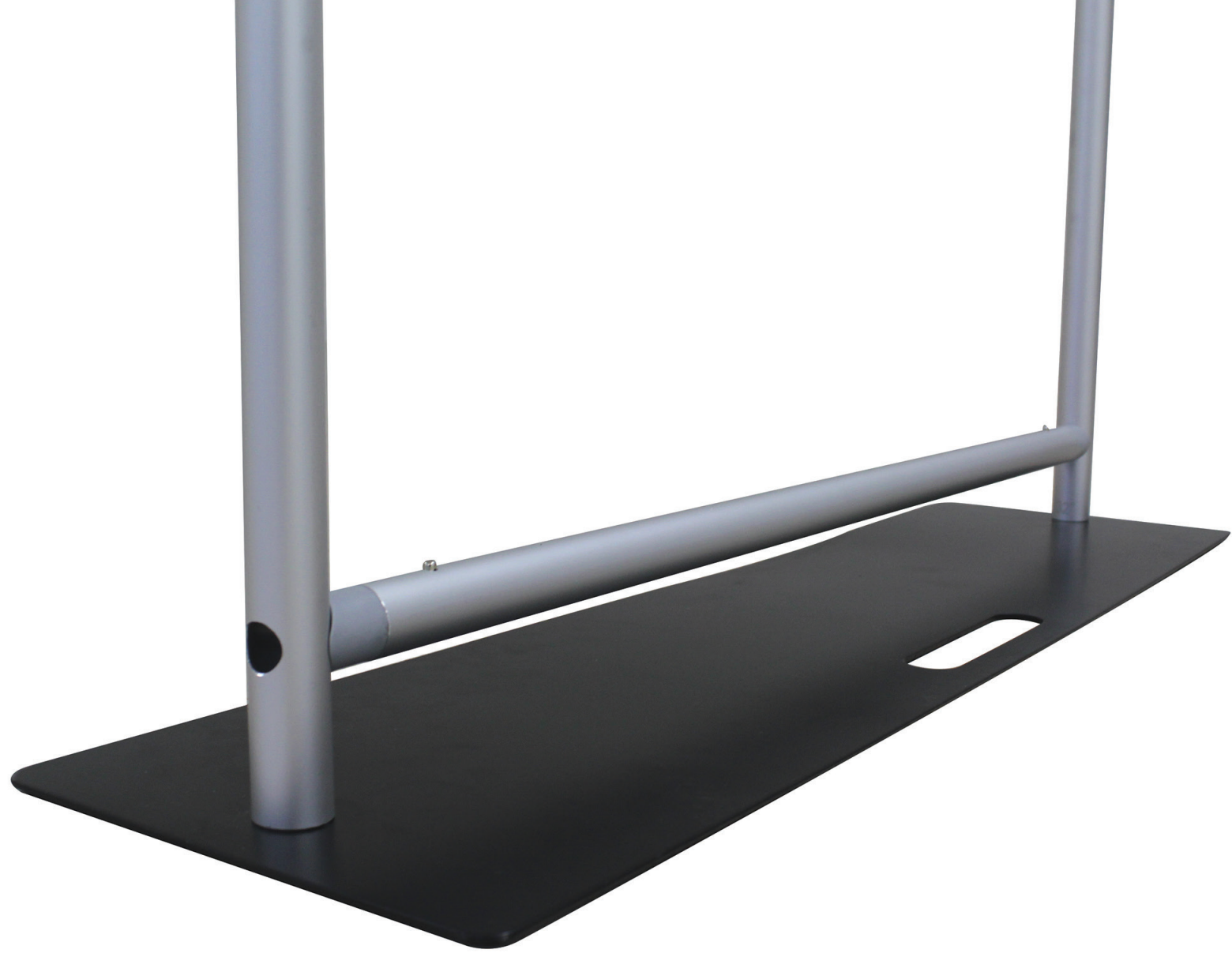
GROMMET
Banner edges are hemmed with #2 grommets. Available in brass, silver & black.

POLE POCKET
The top and/or bottom of the banner is folded over and sewn, creating a pocket that accepts dowels.

FABRIC

VINYL

	EZ EXTEND DISPLAYS	01
	EZ TUBE DISPLAYS	05
	FABRIC POP UP DISPLAYS	11
	RESORT EXTRUSIONS	17
	ORIGAMI TRUSS SYSTEM	27
	TAHOE MODULAR SYSTEM	29
	POP UP DISPLAYS	33
	RETRACTABLE BANNER STANDS	35
	INDOOR BANNER STANDS	39
	OUTDOOR BANNER STANDS	43
	WALLBOX DISPLAYS	51
	HANGING BANNERS	53
	TABLE THROWS	55
	DISPLAY STANDS	59
	LITERATURE STANDS	61
	ACCESSORIES	62



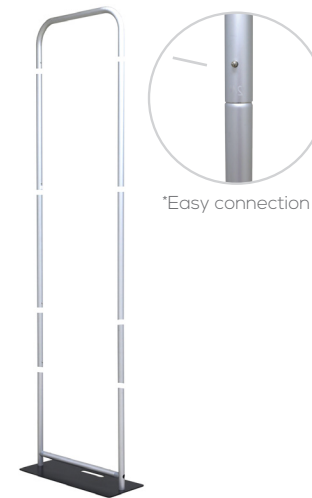
EZ EXTEND 2 ft.
 Product Code: EZ-ETE24
 Frame Size: 25.5"W x 66" to 138"H
 Frame Depth: 9.75"D (including base)
 Weight: 13 lbs (Frame Only)



EZ EXTEND 3 ft.
 Product Code: EZ-ETE36
 Frame Size: 37.5"W x 66" to 138"H
 Frame Depth: 9.75"D (including base)
 Weight: 16 lbs (Frame Only)



EZ EXTEND 4 ft.
 Product Code: EZ-ETE48
 Frame Size: 50"W x 66" to 138"H
 Frame Depth: 9.75"D (including base)
 Weight: 21 lbs (Frame Only)



EZ EXTEND 5 ft.
 Product Code: EZ-ETE60
 Frame Size: 61"W x 66" to 138"H
 Frame Depth: 9.75"D (including base)
 Weight: 25 lbs (Frame Only)



EZ EXTEND DISPLAYS

Set up the EZ Extend in less than five minutes! This sturdy and balanced display includes a steel base, available in widths of 2 ft. to 5 ft., allowing you to display merchandise over your fabric graphic using slatwall accessories like hooks, hangers, shelves and baskets. Add a 1 ft. or 2 ft. extender tubes to increase height from the standard 7.5 ft. to 8.5 ft., 9.5 ft., 10.5 ft. or 11.5 ft. Want it shorter? Just take away tubes for a 5.5 ft. or 6.5 ft. height.

To assemble, secure the longest vertical tubes onto the base using the included allen wrench. Add the bottom horizontal support tube and secure. Snap on the remaining vertical tubes, then top frame with the curved bar to complete. Tilt or lay down EZ Extend to swiftly cover with the pillowcase graphic. Using the industrial-size zipper, zip underneath the bottom support pole, maximizing fabric tension. Choose a single-sided (pick white or black back fabric) or double-sided dye-sublimated stretch fabric print.

Options

Silver Bag
 24" / 36"



Silver Bag with Wheels
 48" / 60"



EZ Tube LED Light
 (Black or Silver)



EZ STAND DISPLAYS



EZ STAND 10 ft.
 Product Code: EZSTND10
 Frame Size: 116"W x 87"H
 Weight: 18 lbs (Frame Only)
 *Silver Bag is included.



EZ STAND 5 ft.
 Product Code: EZSTND60



EZ STAND 4 ft.
 Product Code: EZSTND48



EZ STAND 3 ft.
 Product Code: EZSTND36



Connection
 Product Code: ETFD
 Frame Size: 33.5"W x 90"H
 Weight: 6 lbs (Frame Only)

EZ EXTEND CIRCLE DISPLAYS



EZ EXTEND CIRCLE 3.5 ft.
 Product Code: EZ-EC42X78
 Frame Size: 42"W x 78"H
 Frame Depth: 10"D (including base)
 Weight: 13 lbs (Frame Only)



EZ EXTEND CIRCLE 5 ft.
 Product Code: EZ-EC60X72
 Frame Size: 59.75"W x 72.375"H
 Frame Depth: 10"D (including base)
 Weight: 21lbs (Frame Only)



EZ EXTEND CIRCLE 7 ft.
 Product Code: EZ-EC84X87
 Frame Size: 84"W x 87"H
 Frame Depth: 10"D (including base)
 Weight: 25 lbs (Frame Only)



SMALL EZ BARRIER
 Product Code: EZBRRSM
 Frame Size: 39"W x 35"H
 Weight: 17 lbs (Frame Only)



Connect frames to make longer or L-shaped barriers.



LARGE EZ BARRIER
 Product Code: EZBRRLG
 Frame Size: 78"W x 35"H
 Weight: 20 lbs (Frame Only)

EZ BARRIER DISPLAYS





EZ TUBE DISPLAYS

Sleek and "EZ", our tension fabric systems are a great alternative to standard backwall displays. Quickly assembled in just 5 minutes, slide the tubes together to make the frame and lock in place with a push button snap. Then, simply pull the pillowcase-like graphic over the frame and zip it shut. The zipper, hidden from view, tightens the stretch fabric, beautifully displaying your images. Disassembled, the lightweight frame and graphic fit inside a compact silver bag. The EZ Tube is available in 5 sizes and different styles. Quantity Prices are also available.



EZ TUBE 8 ft. STRAIGHT
 Product Code: EZT8STR
 Frame Size: 96"W x 89"H
 Weight: 30 lbs (Frame Only)
 *Silver Bag is included.
 *includes 2 feet



Best Seller
 ★★★★★
EZ TUBE 10 ft. STRAIGHT
 Product Code: EZT10STR
 Frame Size: 112"W x 89"H
 Weight: 34 lbs (Frame Only)
 *Silver Bag is included.
 *includes 2 feet

EZ TUBE 20 ft. STRAIGHT
 Product Code: EZT20STR
 Frame Size: 240"W x 89"H
 Weight: 68 lbs (Frame Only)
 *Silver Bag is included.
 *includes 3 feet



Cases



Tabletop EZ Tubes
 * 6ft. Tabletop:
 31.5"W x 11.5"H x 5.5"D
 * 8ft. Tabletop:
 36.5"W x 11.5"H x 5.5" D



8ft. and 10ft. EZ Tubes
 * 48"W x 12"H x 6"D



**20ft. EZ Tubes
 Medium Hard Case**
 • 22"W x 39"H x 17"D



EZ Tube LED Light
 (Black or Silver)



EZ TUBE 8 ft. CURVED
 Product Code: EZT8CRV
 Frame Size: 96"W x 89"H
 Weight: 28 lbs (Frame Only)
 *Silver Bag is included.



EZ TUBE 10 ft. CURVED
 Product Code: EZT10CRV
 Frame Size: 120"W x 89"H
 Weight: 32 lbs (Frame Only)
 *Silver Bag is included.



EZ TUBE 20 ft. CURVED
 Product Code: EZT20CRV
 Frame Size: 240"W x 89"H
 Weight: 85 lbs (Frame Only)
 *Medium Hard Case is included.



EZ TUBE CURVED TABLETOP 6 ft./8 ft.
 Product Code: EZT6CRVTT/EZT8CRVTT
 Frame Size: 72"W x 60"H / 96"W x 60"H
 Weight: 19 lbs / 24 lbs (Frame Only)
 *Silver Bag is included.



EZ PILLAR 8 ft.
 Product Code: EZPIL8
 Frame Size: 36"W x 96"H x 36"D
 Weight: 21 lbs (Frame Only)
 *Bag is included.



EZ PILLAR 10 ft.
 Product Code: EZPIL10
 Frame Size: 36"W x 120"H x 36"D
 Weight: 25 lbs (Frame Only)
 *Bag is included.



EZ TOWER DISPLAYS

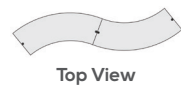


EZ TOWER 8 ft.
 Product Code: EZTWR8
 Frame Size: 36"W x 96"H x 36"D
 Weight: 32 lbs (Frame Only)
 *Bag is included.



EZ TOWER 10 ft.
 Product Code: EZTWR10
 Frame Size: 36"W x 120"H x 36"D
 Weight: 25 lbs (Frame Only)
 *Bag is included.

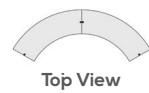




EZ FABRIC CURVED COUNTER

S-Shape

Product Code: EZ-CRVFABCTR-GS
 Frame Size: 81"W x 38"H x 29.5"D
 Weight: 53 lbs (Frame Only)



EZ FABRIC CURVED COUNTER

Double

Product Code: EZ-CRVFABCTR-G2
 Frame Size: 81"W x 38"H x 29.5"D
 Weight: 70 lbs (Frame Only)



EZ FABRIC COUNTER

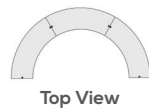
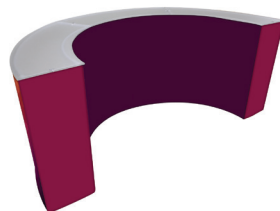
Product Code: EZ-FABCTR
 Frame Size: 38.5"W x 38"H x 14.57"D
 Weight: 27 lbs (Frame Only)



EZ FABRIC CURVED COUNTER

Single

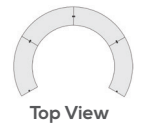
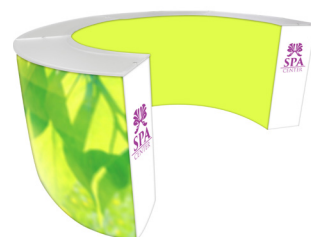
Product Code: EZ-CRVFABCTR
 Frame Size: 46"W x 38"H x 18"D
 Weight: 35 lbs (Frame Only)



EZ FABRIC CURVED COUNTER

Triple

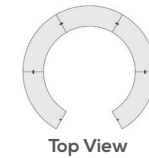
Product Code: EZ-CRVFABCTR-G3
 Frame Size: 94"W x 38"H x 46.5"D
 Weight: 105 lbs (Frame Only)



EZ FABRIC CURVED COUNTER

Quad

Product Code: EZ-CRVFABCTR-G4
 Frame Size: 94"W x 38"H x 63.5"D
 Weight: 140 lbs (Frame Only)



EZ FABRIC CURVED COUNTER

Quint

Product Code: EZ-CRVFABCTR-G5
 Frame Size: 94"W x 38"H x 88"D
 Weight: 175 lbs (Frame Only)





FABRIC POP UP DISPLAYS

Fabric Pop Up Displays are the perfect display on the go. They're ready in minutes. The lightweight aluminum alloy frame locks in place using hooks. Interchangeable graphics make it a versatile choice. Easily collapse the frame with front graphic attached and stow in your carry bag.



NEW SIZES AVAILABLE:
10 x 10 ft., 15 x 10 ft., 20 x 10 ft.

RPL 30 ft. STRAIGHT
Product Code: RPL12X3
Frame Size: 345"W x 89"H x 12"D
Weight: 68 lbs (Frame Only)
Nylon carry bag is included.



RPL 20 ft. STRAIGHT
Product Code: RPL8X3
Frame Size: 240"W x 89"H x 12"D
Weight: 47 lbs (Frame Only)
Nylon carry bag is included.



RPL 15 ft. STRAIGHT
Product Code: RPL6X3
Frame Size: 180"W x 89"H x 12"D
Weight: 36 lbs (Frame Only)
*Nylon carry bag is included.

Options

RPL Light



150 Watt
Halogen Light
11 ft. cord
Black or Silver

RPL LED Light



LED Light
9.5' cord
Black or Silver

Nylon Carry Bag





RPL 8 ft. STRAIGHT

Product Code: RPL3X3STR
 Frame Size: 89"W x 89"H x 12"D
 Weight: 21 lbs (Frame Only)
 *Nylon carry bag is included.

RPL 8 ft. CURVED

Product Code: RPL3X3CRV
 Frame Size: 91.5"W x 89"H x 22"D
 Weight: 21 lbs (Frame Only)
 *Nylon carry bag is included.

Best Seller
 ★★★★★

RPL 10 ft. STRAIGHT

Product Code: RPL4X3STR
 Frame Size: 118"W x 89"H x 12"D
 Weight: 26 lbs (Frame Only)
 *Nylon carry bag is included.

RPL 10 ft. CURVED

Product Code: RPL4X3CRV
 Frame Size: 116.5"W x 89"H x 31"D
 Weight: 26 lbs (Frame Only)
 *Nylon carry bag is included.



Best Seller
 ★★★★★

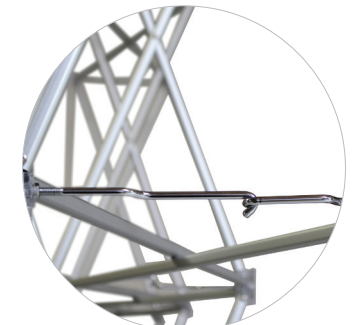
READY POP 10 ft. STRAIGHT

Product Code: RP4x3STR
 Frame Size: 118"W x 89"H x 12"D
 Weight: 40 lbs. (Frame Only)
 *Nylon carry bag is included.



READY POP 10 ft. CURVED

Product Code: RP4x3CRV
 Frame Size: 112"W x 89"H x 24"D
 Weight: 39 lbs. (Frame Only)
 *Nylon carry bag is included.



Steel Hook

**MORE SIZES AVAILABLE:
 5 x 7.5 ft. AND 7.5 x 5 ft.**



RPL 5 x 7.5 ft. STRAIGHT

Product Code: RPL2X3STR
 Frame Size: 60"W x 90"H x 13.5"D
 Weight: 16 lbs (Frame Only)
 *Nylon carry bag is included.

RPL 7.5 x 5 ft. STRAIGHT

Product Code: RPL3X2STR
 Frame Size: 90"W x 60"H x 13.5"D
 Weight: 16 lbs (Frame Only)
 *Nylon carry bag is included.

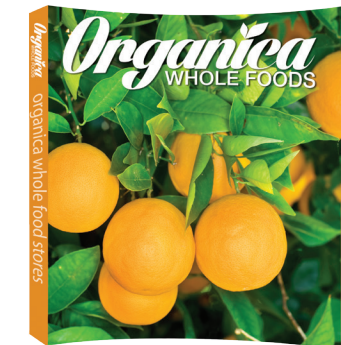
RPL 5 ft. STRAIGHT

Product Code: RPL2X2
 Frame Size: 60"W x 60"H x 12"D
 Weight: 12 lbs (Frame Only)
 *Nylon carry bag is included.



READY POP 8 ft. STRAIGHT

Product Code: RP3x3STR
 Frame Size: 89"W x 89"H x 12"D
 Weight: 38 lbs. (Frame Only)
 *Nylon carry bag is included.



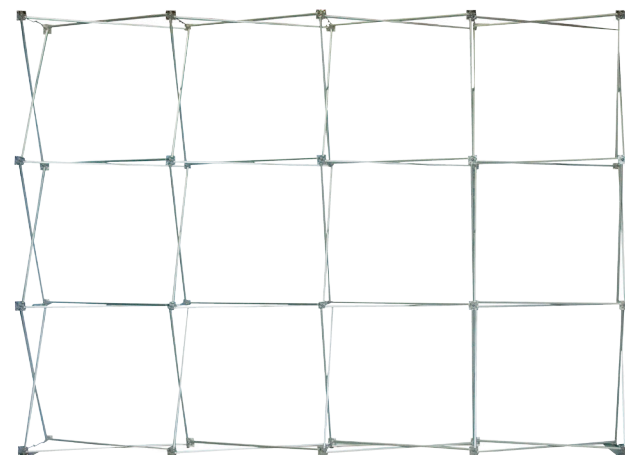
READY POP 8 ft. CURVED

Product Code: RP3x3CRV
 Frame Size: 90"W x 89"H x 24"D
 Weight: 24 lbs. (Frame Only)
 *Nylon carry bag is included.



READY POP COUNTER

Product Code: RPCUNTR
 Display Size: 40"W x 40"H x 12.5"D
 Counter Size: 35"W x 15.5"D
 Weight: 27 lbs (Frame Only)
 *Nylon carry bag is included.



Back of Frame
 Easy to Set Up

Options

Half Hard Case



Molded plastic carry case with inset wheels for easy mobility. Case also has a center grip. 16.5"W x 38.5"H x 15.75"D 24 lbs. For Small & Medium

Medium Hard Case



Molded plastic case including wheels and a handle for easy transport. 22"W x 39"H x 17"D 31 lbs. For Large *Optional graphic wrap

Ready Pop Light



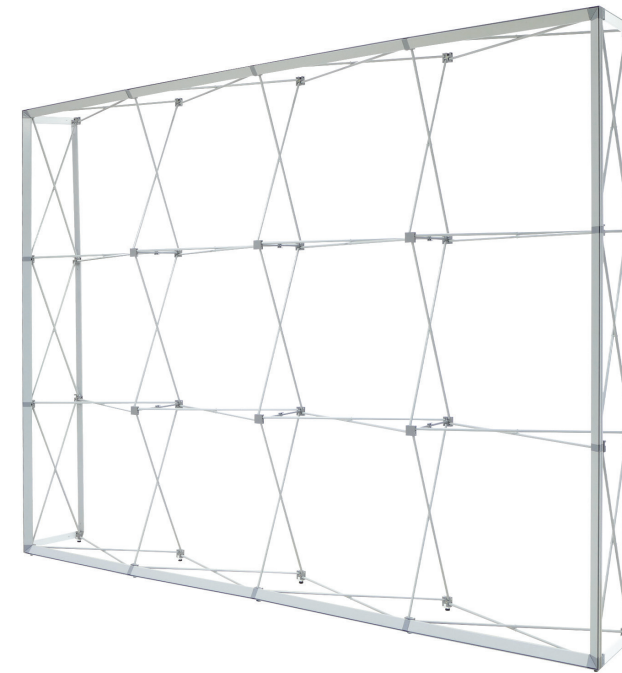
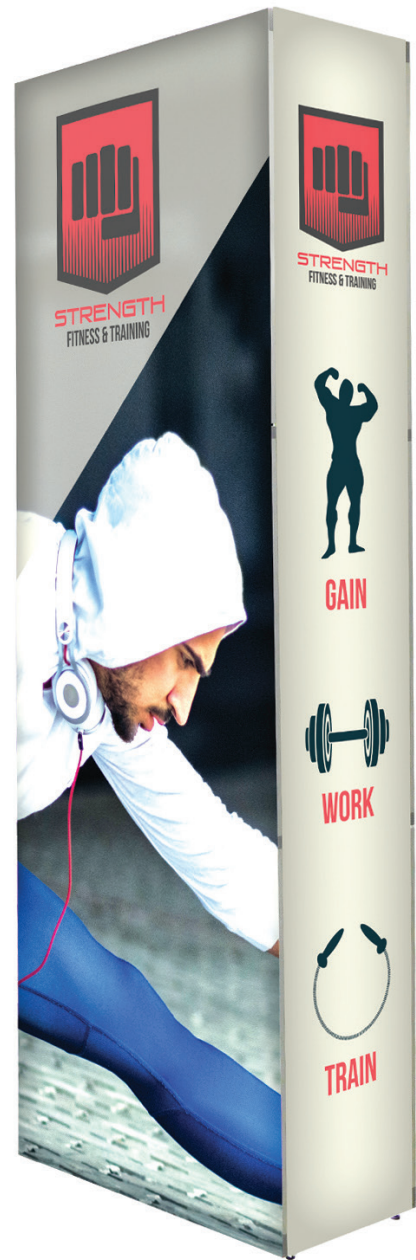
150 Watt Halogen Light 11 ft. cord Black or Silver

Ready Pop LED Light



LED Light 9.5' cord Black or Silver

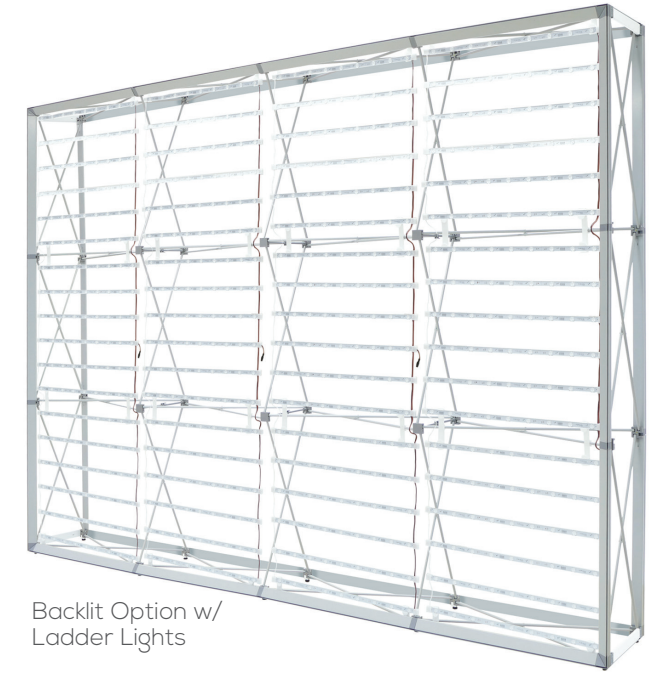
SIZES AVAILABLE:
2.5 x 7.5 ft., 5 x 7.5 ft., 7.5 x 5 ft.,
7.5 x 7.5 ft., 10 x 7.5 ft. AND 10 x 10 ft.



Product Code: LLW4X3NL
Frame Size: 117.75"W x 88.75"H x 14.5"D
Weight: 30 lbs. (Frame Only)

Frame Only Includes:

- (2) 4-Section Channel Bars
- (4) 3-Section Channel Bars
- (1) Channel Bar Bag
- (1) Carry Bag



Backlit Option w/
Ladder Lights

Product Code: LLW4X3Frame
Size: 117.75"W x 88.75"H x 14.5"D
Weight: 31 lbs. (Frame Only)

Backlit Frame Only Includes:

- (4) 3-Section Channel Bars
- (4) 4-Section Channel Bars
- (1) Channel Bar Bag
- (1) Carry Bag (for frame)
- (4) Ladder Light Strips
- (4) Bags for Ladder Lights
- (4) Transformers
- (16) Top/Bottom Light Brackets
- (16) Middle Light Brackets
- (4) Male Transformer Connector Cords
- (4) Female Transformer Connector Cords
- (1) Transformer Power Cord



*For easier connection, please order your graphics without endcaps.

*For easier connection, please order your graphics without endcaps.



RESORT EXTRUSIONS

Introducing new product lines for the Resort Extrusions—an expanding family of standard- and custom-size extrusions of varied widths and compositions. Vail and Big Sky join already-existing Resorts Extrusions: Aspen, Mammoth and Whistler. All five Resort Extrusions are aluminum and equipped for Silicone Edge Graphics (SEG), yet each hold true to their individual style. What makes them different? Vail comes in profile widths of 40mm, 60mm and 100mm with a smooth outside finish. Aspen's finish has a line groove, like an indented stripe, for added style. Big Sky is a corner extrusion to create a 3-D display, like the Big Sky Tower or Counter. Furthermore, you can upgrade to toolless connectors for the Vail and Whistler; add lights (ladder or edge-lit) for the Mammoth, Whistler, or Vail*; add eye hooks for hanging overhead, feet for free-standing, or wall mounts for wall attachment.

*Only available for the Vail-100D (s-s/d-s), Vail-120D (s-s/d-s), or Vail-60S (s-s).



ALPINE BOOTH A
 Product Code: ABA
 Display Size: 114.4"W x 94.5"H x 104.5"D
 *Flooring not supplied by WS Display.



ALPINE BOOTH B
 Product Code: ABB
 Display Size: 112.6"W x 94.5"H x 112.6"D
 *Flooring not supplied by WS Display.



ALPINE BOOTH D
 Product Code: ABD
 Display Size: 112.6"W x 94.5"H x 16"D
 Flooring not supplied by WS Display.



ALPINE BOOTH F
 Product Code: ABF
 Display Size: 226"W x 94.5"H x 16"D
 Flooring not supplied by WS Display.

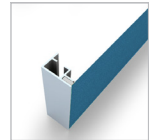
CUSTOMIZATION

Sometimes it is hard to choose from predesigned configurations when you are trying to fit something right for your space. If you didn't find what you were looking for in our new line of predesigned Alpine Booth configurations, you can Create Your Own Alpine with Alpine CYO.

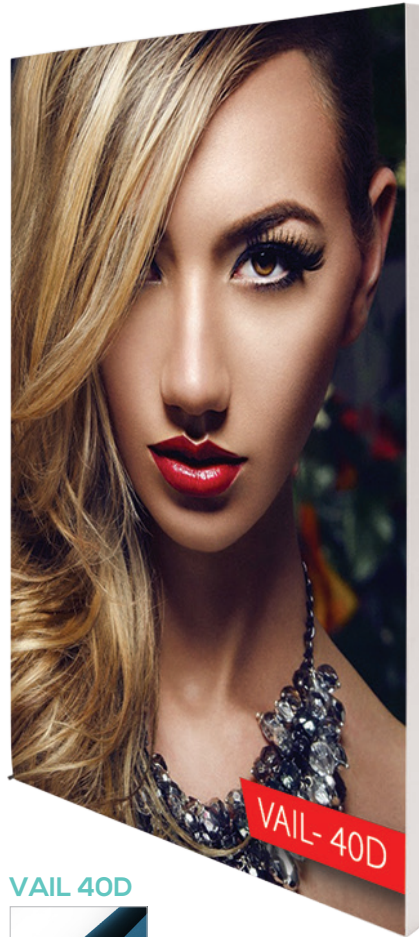
Please visit our website for further details.



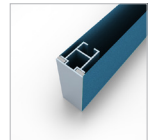
VAIL 40S



- 40mm wide profile
- Single-Sided



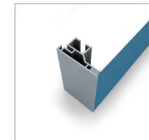
VAIL 40D



- 40mm wide profile
- Double-Sided



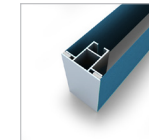
VAIL 60S



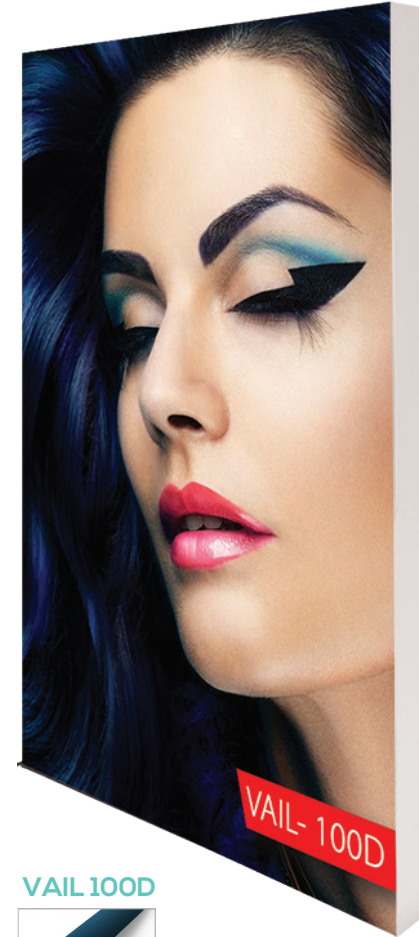
- 60mm wide profile
- Single-Sided



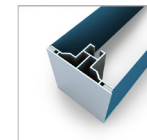
VAIL 60D



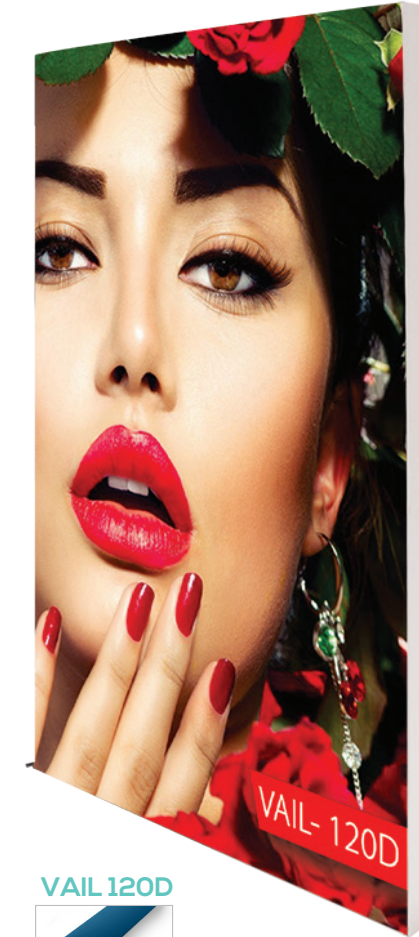
- 60mm wide profile
- Double-Sided



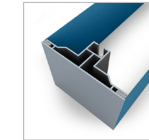
VAIL 100D



- 100mm wide profile
- Double-Sided
- Backlit/Non-Backlit



VAIL 120D

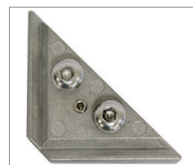


- 120mm wide profile
- Double-Sided
- Backlit/Non-Backlit

AVAILABLE IN SIZES RANGING FROM 1 ft. TO 10 ft.



Yeti Side Foot



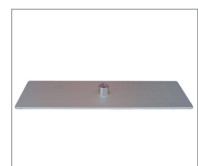
Triangle Lock



Vail Foot



Corner Connector



Flat Foot



Center Connector



Ceiling Hook

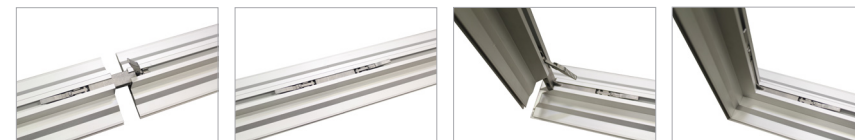


Wall Hook



VAIL TOOLLESS FEATURES

Tool free corner locks and straight connectors that are compatible with all Vail Extrusions.



* Resort Catalog is also available. Check website for more details.

Options

Light Strip

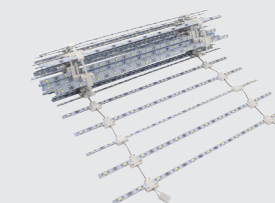
Product Code: RESORT-LS
*Recommended for smaller frames



Transformer

Ladder Lights

Product Code: RESORT-LDLTS



Small Light



Large Light



BIG SKY COUNTER 2 ft.

Product Code: BIGSKYC2X2GP
 Frame Size: 24"L x 40"H x 24"D
 Dimensions: Box 1 (49"x7"x10")
 Box 2 (24"x24"x4")
 Weight: 27 lbs (Frame Only)



BIG SKY COUNTER 4 ft.

Product Code: BIGSKYC4X2GP
 Frame Size: 48"L x 40"H x 24"D
 Dimensions: Box 1 (49"x7"x10")
 Box 2 (24"x24"x4")
 Weight: 40 lbs (Frame Only)



BIG SKY COUNTER 6 ft.

Product Code: BIGSKYC6X2GP
 Frame Size: 72"L x 40"H x 24"D
 Dimensions: Box 1 (73"x7"x10")
 Box 2 (24"x24"x4")
 Weight: 53 lbs (Frame Only)

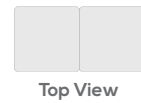
2 ft. Hardware Package Includes:

- (4) Vertical Extrusion pieces with connectors
- (8) Horizontal Extrusion pieces with connectors
- (1) Acrylic Countertop
- (1) Tool



4 ft. Hardware Package Includes:

- (6) Vertical Extrusion pieces with connectors
- (12) Horizontal Extrusion pieces with connectors
- (2) Acrylic Countertops
- (1) Tool



6 ft. Hardware Package Includes:

- (8) Vertical Extrusion pieces with connectors
- (16) Horizontal Extrusion pieces with connectors
- (3) Acrylic Countertops
- (1) Tool



BIG SKY TOWER 3 ft.

Product Code: BIGSKYT3X8GP
 Frame Size: 3'L x 8'H x 3'D
 Dimensions: 97" x 7" x 10"
 Weight: 26 lbs (Frame Only)



BIG SKY TOWER 4 ft.

Product Code: BIGSKYT4X8GP
 Frame Size: 4'L x 8'H x 4'D
 Dimensions: 97" x 7" x 10"
 Weight: 32 lbs (Frame Only)



BIG SKY TOWER 5 ft.

Product Code: BIGSKYT5X8GP
 Frame Size: 5'L x 8'H x 5'D
 Dimensions: 97" x 7" x 10"
 Weight: 40 lbs (Frame Only)

3 ft. Hardware Package Includes:

- (4) Vertical Extrusion pieces with connectors
- (8) Horizontal Extrusion pieces with connectors
- (1) Tool

4 ft. Hardware Package Includes:

- (4) Vertical Extrusion pieces with connectors
- (8) Horizontal Extrusion pieces with connectors
- (1) Tool

5 ft. Hardware Package Includes:

- (4) Vertical Extrusion pieces with connectors
- (8) Horizontal Extrusion pieces with connectors
- (1) Tool



BIG SKY-32D
 • 32mm wide profile
 • Double-Sided
 • Corner extrusion



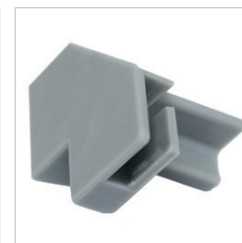
BIG SKY-40CG
 • 40mm wide profile
 • Support extrusion



BIG SKY-IC
 • Inside Corner Extrusion



ACRYLIC TOP
 • Custom acrylic top



BIG SKY CAP 1



BIG SKY CAP 2



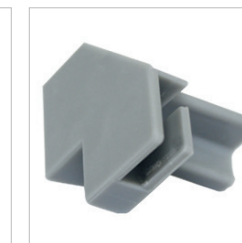
BIG SKY-32D
 • 32mm wide profile
 • Double-Sided
 • Corner extrusion



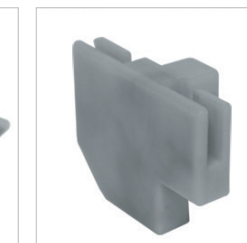
BIG SKY-40CG
 • 40mm wide profile
 • Support extrusion



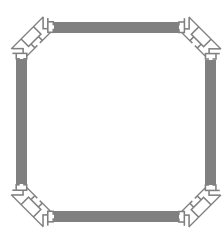
BIG SKY-IC
 • Inside Corner Extrusion



BIG SKY CAP 1



BIG SKY CAP 2



Lighting Options

Light Strip

Product Code: RESORT-LS
 *Recommended for smaller frames

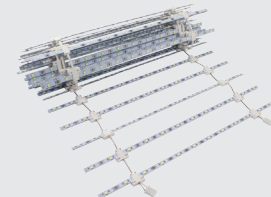


Transformer



Ladder Lights

Product Code: RESORT-LDLTS



Custom Shape & Size Option

Try the Big Sky Triangle for a 3-sided option instead of 4-sided cube.

Taller or custom size heights are also available. Check our website or call us for more details.

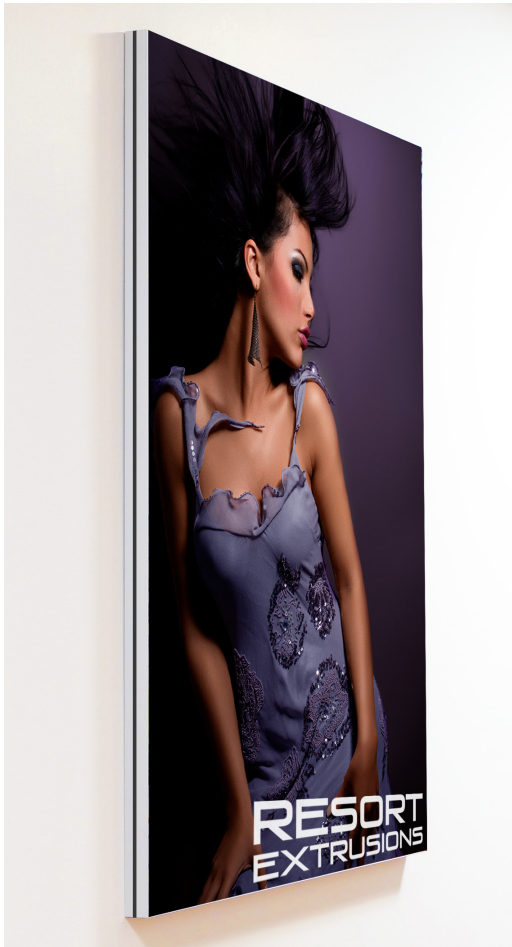


BIG SKY-TRI



BIG SKY-60D

ASPEN FABRIC FRAME



AVAILABLE IN SIZES RANGING FROM 1 ft. TO 10 ft.



Corner Bracket



Frame Thickness: 1.57"

Single-Sided Graphic



Front

Back

Double-Sided Graphic



Front

Back

ASPEN BACKWALL



ASPEN BACKWALL 20 ft.

Single-Sided
Product Code: AFBW20x7.5S
Double-Sided
Product Code: AFBW20x7.5D
*Includes 2 cases

MORE SIZES AVAILABLE:
7.5 x 7.5 ft., 10 x 7.5 ft. AND
15 x 7.5 ft.

ASPEN ONYX



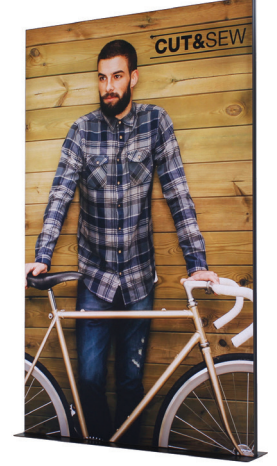
ASPEN ONYX 2 ft. DOUBLE-SIDED

Product Code: AFON2
*Includes Steel Base



ASPEN ONYX 4 ft. DOUBLE-SIDED

Product Code: AFON4
*Includes Steel Base



ASPEN ONYX 5 ft. DOUBLE-SIDED

Product Code: AFON5
*Includes Steel Base

ASPEN T-LEG



ASPEN T-LEG 2 ft.

Double-Sided
Product Code: AFT2



ASPEN T-LEG 3 ft.

Double-Sided
Product Code: AFT3



Caster (set of 4)

Options



Steel Base
2', 3', 4', 5'



MAMMOTH 16 x 8 ft. BACKLIT

Product Code: MAM16X8LBFG
 Frame Size: 16'W x 7.8'H
 Frame Depth: 4.75"



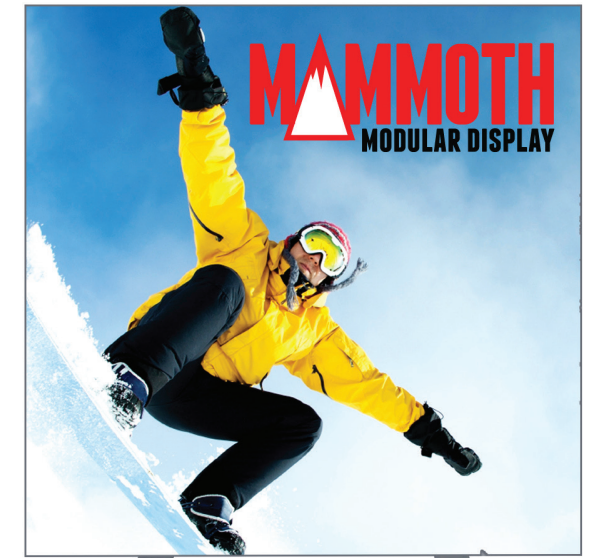
MAMMOTH 16 x 8 ft. NON-BACKLIT

Product Code: MAM16X8DF
 Frame Size: 16'W x 7.8'H
 Frame Depth: 4.75"



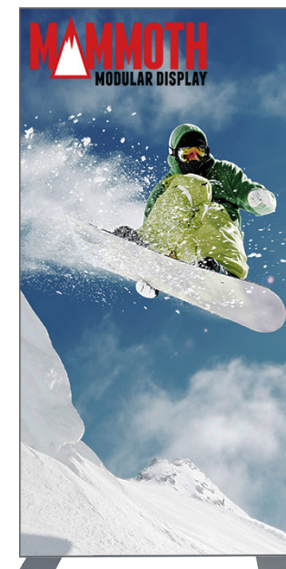
MAMMOTH 10 x 8 ft.

Product Code: MAM10X8
 Frame Size: 10'W x 7.8'H



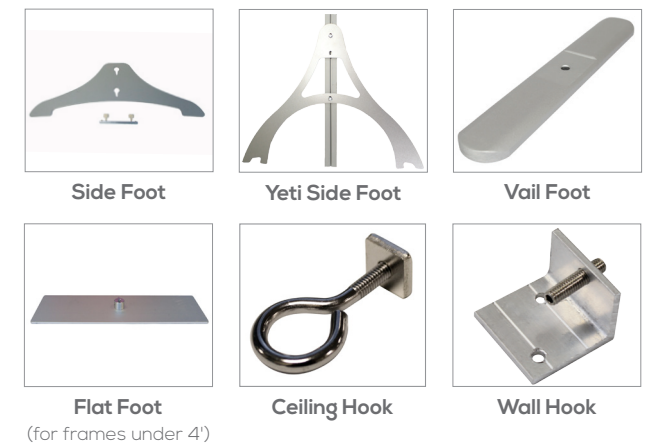
MAMMOTH 8 x 8 ft.

Product Code: MAM8X8
 Frame Size: 8'W x 7.8'H



MAMMOTH 4 x 8 ft.

Product Code: MAM4X8
 Frame Size: 4'W x 7.8'H



Options



Small Light



Large Light

Light Strip

Product Code: RESORT-LS
 *Recommended for smaller frames



Transformer





ORIGAMI TRUSS SYSTEM

Introducing Origami Truss systems! Composite truss is much lighter than the typical aluminum or steel Truss on the market, yet load bearing. One person setup time is 30-45 minutes. Truss conveniently collapses flat for super easy storage. Dye-sublimated single-sided fabric graphics are finished with 1/4" pole pockets on top and bottom and connect to frame with aluminum rods and clips. Accessorize with shelves, counter, lights, and brochure holder. Choose from 3 selections.



ORIGAMI TRUSS SYSTEM BACKWALL

Product Code: OTSBACKWALL
Display Size: 109"W x 96"H x 15.75"D



ORIGAMI TRUSS SYSTEM CORNER

Product Code: OTSCORNER
Display Size: 120"W x 96"H x 120"D



ORIGAMI TRUSS TOWER

Product Code: OT-TOWER
Display Size: 60.5"W x 203.5"H x 60.5"D

Options



Brochure Holder

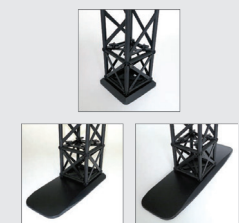


LED Light

Halogen Lights



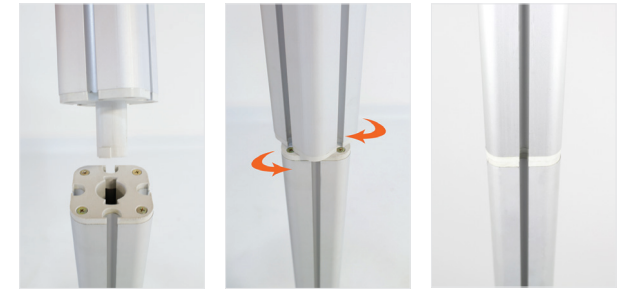
Monitor Bracket



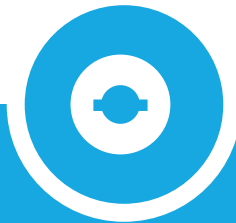
Different foot options



TAHOE TWISTLOCK 10 ft. X
 Product Code: TTLX
 Display Size: 117.3"W x 96"H
 Dimensions: 18" x 21" x 53"
 Weight: 120 lbs (Hardware Only)
 *Twistlock Case is included.



TAHOE TWISTLOCK 13 ft. Y
 Product Code: TTLY
 Display Size: 158"W x 96"H
 Dimensions & Weight:
 Box 1 = 18" x 21" x 53" / 150 lbs
 Box 2 = 24" x 24" x 6" / 12 lbs
 (Hardware Only)
 *Twistlock Case is included.



TAHOE MODULAR DISPLAYS

A modular display with a twist, the Tahoe Twistlock has been redesigned to be completely toolless. Replicated to keep the striking look of the Classic Tahoe, the Tahoe Twistlock is much easier to set up and 50% faster. Simply twist the pieces together to lock into place and untwist to disassemble. The Tahoe Twistlock is available in 10ft., 13ft., and 20ft. sizes and is fully customizable, making it the perfect modular back wall display.

Did we mention it's toolless?

Options



Twistlock Case
 Inner Dimensions:
 19" x 16" x 50"
 Outer Dimensions:
 21" x 17" x 53"



Acrylic Table



Acrylic Side Panel



Acrylic Shelves
 Small / Large





TAHOE TWISTLOCK 20 ft. Z

Product Code: TTLZ
 Display Size: 243"W x 96"H
 Dimensions & Weight:
 Box 1 = 18" x 23" x 53" / 149 lbs
 Box 2 = 18" x 23" x 53" / 149 lbs
 (Hardware Only)
 *Twistlock Case is included.



TAHOE TWISTLOCK 30 ft. V

Product Code: TTLV
 Display Size: 352.13"W x 96"H
 Dimensions & Weight:
 Box 1 = 18" x 23" x 53" / 126 lbs
 Box 2 = 18" x 23" x 53" / 130 lbs
 (Hardware Only)
 *Twistlock Case is included.

SLATWALLS FOR TWISTLOCK

Available for the Y, Z and Rack models, add slatwalls to replace the small graphic panel area. Please call us for more info.



TAHOE TWISTLOCK RACK

Product Code: TTLRACK
 Display Size: 71.5"W x 96"H
 Dimensions = 18" x 21" x 53"
 Weight: 108 lbs (Hardware Only)
 *Twistlock Case is included.



TAHOE TWISTLOCK 10 ft. W

Product Code: TTLW
 Display Size: 117.3"W x 96"H
 Dimensions = 19" x 21" x 53"
 Weight: 132 lbs (Hardware Only)
 *Twistlock Case is included.



CUSTOMIZATION

Have a vision? Make your conceptual ideas become a reality! Use the twistlock poles to construct your own original version of the Tahoe Twistlock display. For added style, choose from a variety of Tahoe accessories to adorn your display.

Call us for further details.



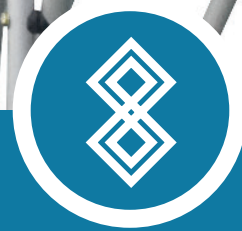
Acrylic Table



Acrylic Side Panel



Acrylic Shelves
 Small / Large



POP UP DISPLAYS

The Big Wave Pop Up Display, a trade show classic, comes with everything you need to effectively promote your product. Designed specifically to fit 10ft. trade show booths, the straightforward look of the Big Wave gives a professional presentation. Expand the geometric aluminum frame, click locking mechanisms into place, and hang the graphic panels to complete set up. Various styles and sizes available up to 20ft wide. Choose PVC or laminate material.

20 ft. GULLWING



Product Code: PUGW20G
Size: 20'W x 7.4'H x 3.5'D

20 ft. SERPENTINE



Product Code: PUSP20G
Size: 20'W x 7.4'H x 2.7'D

10 ft. BIG WAVE



Product Code: PU10G
Size: 10'W x 7.4'H x 3.5'D

9 ft. STRAIGHT



Product Code: PU9G
Size: 9'W x 7.4'H x 1'D

TABLETOP POP-UP



*Tables not supplied by WS Display.
Product Code: PUTT8
Size: 8'W x 5'H x 2'D
Product Code: PUTT6
Size: 6'W x 5'H x 1.5'D



Accessories

- Podium
- Aluminum Frame
- Halogen Lights (150W)
- Cords
- Magnetic Strip Roll
- Hanging Hardware Kit
- Channel Bars

Fabric Panel Color

*Fabric panels not available for Half Hard Cases.

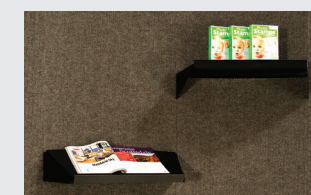
-  **BLACK**
-  **SILVER**
PMS 423C
-  **BLUE**
PMS 281C

Podium Graphic

* Graphic podium wrap is optional.
(PVC)
(LAMINATED DISPLAY FILM)



Options



Shelf
27.165" width / 11.5" depth



Vegas Light
Black
50W / 6.2' cord

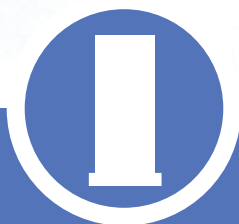
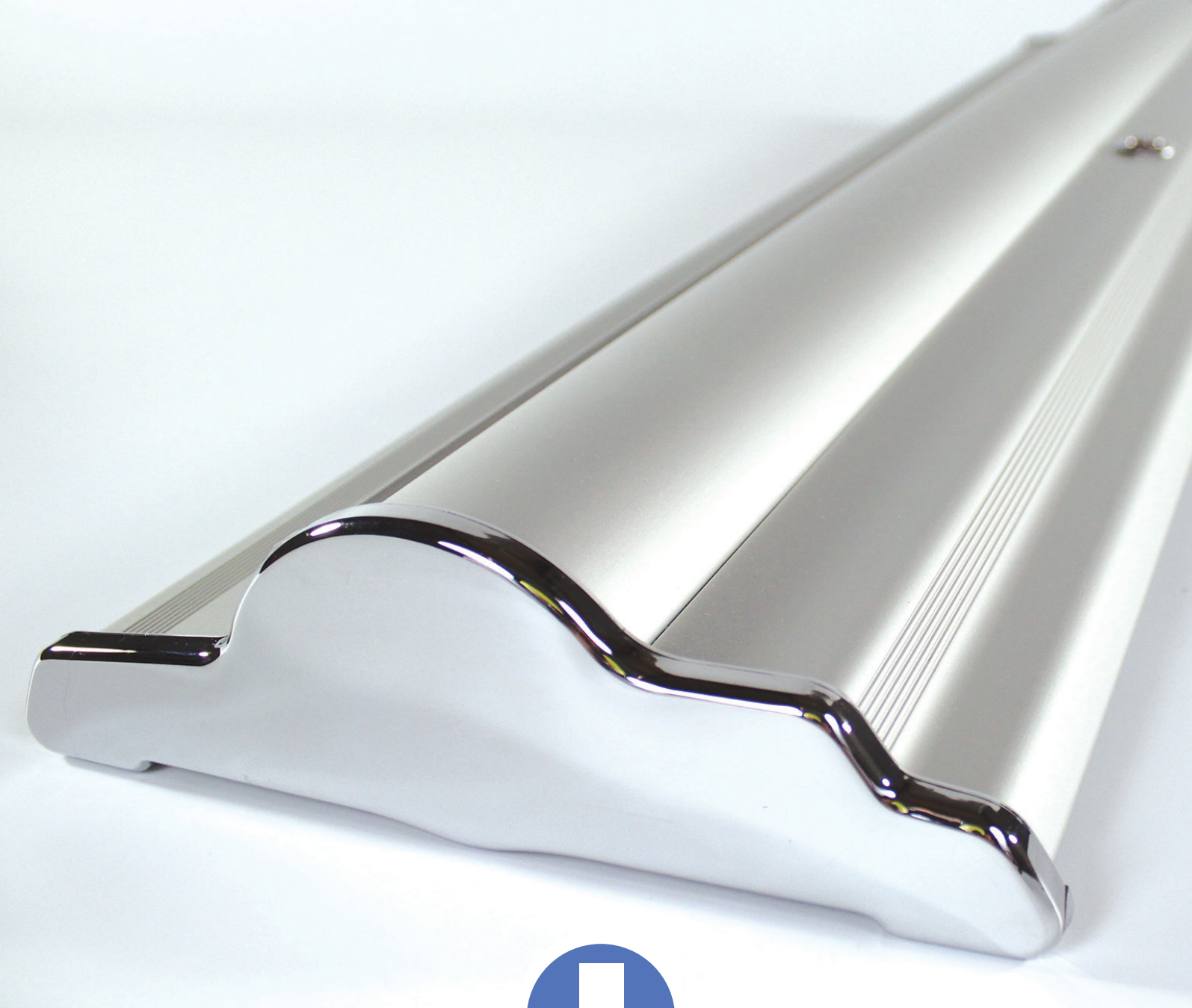


Halogen Light
Black
150W / 6.3' cord



LED Light
Black or Silver -
9.5' cord





RETRACTABLE BANNER STANDS

Step up your game with the Silverstep retractable banner stand. Uniquely designed to be durable, stylish and reusable, the Silverstep is a fan-favorite and perfect for any occasion. With 4 widths available and a telescopic pole, the Silverstep offers a wide range of dimensions. Place the base on the ground, assemble telescopic pole, pull out graphics, and affix to pole. Graphics are easily changeable due to the hook and loop attachment on the canvas leader panel (with a 6" bleed). Deluxe travel bag included. Lifetime warranty on hardware.



SILVERSTEP® 24 in.
 Product Code: SS24
 Size: 24"W x 85"H to 92"H
 Base Width: 25.5"
 Weight: 12 lbs (Stand Only)



SILVERSTEP® 36 in.
 Product Code: SS36
 Size: 36"W x 69"H to 92"H
 Base Width: 37.6"
 Weight: 16 lbs (Stand Only)



SILVERSTEP® 48 in.
 Product Code: SS48
 Size: 48"W x 69"H to 92"H
 Base Width: 49.5"
 Weight: 21 lbs (Stand Only)



SILVERSTEP® 60 in.
 Product Code: SS60
 Size: 60"W x 69"H to 92"H
 Base Width: 61.65"
 Weight: 24 lbs (Stand Only)

SILVERSTEP® TABLETOP



SILVERSTEP® TABLETOP 24 in.
 Product Code: SSTT24
 Adjustable Height: 45" to 76"

SILVERSTEP® TABLETOP 36 in.
 Product Code: SSTT36
 Adjustable Height: 36" to 59"

SILVERSTEP® TABLETOP 48 in.
 Product Code: SSTT48
 Adjustable Height: 36" to 59"

SILVERSTEP® TABLETOP 60 in.
 Product Code: SSTT60
 Adjustable Height: 36" to 59"

Options

Connector

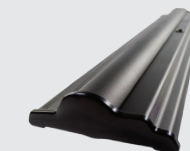


Silver Light (Black or Silver)

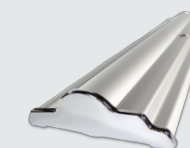
Cord: 8.6 ft.
50W



Deluxe travel bag included.



BLACK (available for 24in. & 36 in.)



SILVER (available for all widths)



Silver (all widths)



Black (33.5" only)



*Nylon Bag is included.

ECONO ROLL

Product Code: ER24 / ER31.5 / ER33.5 / ER36
 Total Display Height: 82"
 Graphic Size: 24"W / 31.5"W / 33.5"W / 36"W x 80"H
 Graphic Material: Super Flat Vinyl
 Base Size: 24.5"W/32"W/34"W/36.5"W x 3.5"H x 3.5"D (15"D with feet)
 *(24" stand has one foot.)

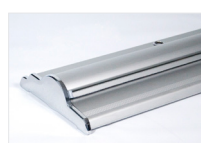


*Travel bag is included.

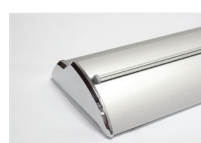


PORTABLE ROLL UP

Product Code: PR24 / PR33.5
 Total Display Height: 82"
 Graphic Size: 24"W x 80"H / 33.5"W x 80"H
 Graphic Material: Super Flat Vinyl



*Travel bag is included.



*Travel bag is included.



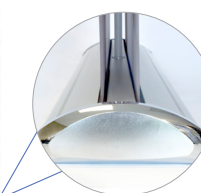
*Travel bag is included.



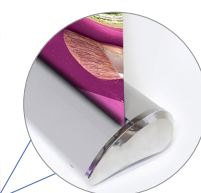
*Silver travel bag is included.



*Silver travel bag is included.



*Silver travel bag is included.



STEPPY 33.5 in.

Product Code: STPY
 Graphic Size: 33.5"W x 69" to 92"H
 Graphic Material: Super Flat Vinyl

CONTOUR 33.5 in.

Product Code: CTR335
 Graphic Size: 33.5"W x 69" to 92"H
 Graphic Material: Super Flat Vinyl

MAUI 33.5 in.

Product Code: MAUI
 Graphic Size: 33.5"W x 80" H
 Graphic Material: Super Flat Vinyl

SILVERWING 33.5 in.

Single-Sided
 Product Code: SW1
 Graphic Size: 33.5"W x 69 to 92"H
 Graphic Material: Super Flat Vinyl
 Base Size: 35"W x 3"H x 8.5"D

Double-Sided
 Product Code: SW2
 Graphic Size: 33.5"W x 69 to 80"H
 Graphic Material: Super Flat Vinyl
 Base Size: 35"W x 3 "H x 8.5"D

DOUBLE STEP

Product Code: DS24 / DS36
 Graphic Size: 24"W x 74"H / 36"W x 69" to 74"H
 Graphic Material: Super Flat Vinyl / Roll Up Fabric
 *This cartridge only works with thin material.

BABYSTEP

Product Code: BS33.5 / BS36 / BS39.25
 Graphic Height: 69" to 74"
 Graphic Width: 33.5" / 36" / 39.25"
 Graphic Material: Super Flat Vinyl / Roll Up Fabric
 Base Width: 34" / 37" / 40"
 Weight: 16 lbs / 17 lbs / 18 lbs
 *Banner attaches by hook & loop on the bottom.



*Travel bag is included.



*Travel bag is included.



*Travel bag is included.



MOZZIE ROLL UP

Product Code: MZRUP
 Graphic Size: 33.5"W x 80"H
 Graphic Material: Super Flat Vinyl
 Weight: 6 lbs (Stand Only)

BRUMBY ROLL UP

Product Code: BRRUP
 Graphic Size: 33.5"W x 80"H
 Graphic Material: Super Flat Vinyl
 Weight: 11 lbs (Stand Only)

PUGGLE ROLL UP

Product Code: PGRUP
 Graphic Size: 33.5"W x 64"H / 72"H / 84"H / 90"H
 Graphic Material: Super Flat Vinyl
 Weight: 12 lbs (Stand Only)

Options



Silver Light (Black or Silver)



Carry bag is included.



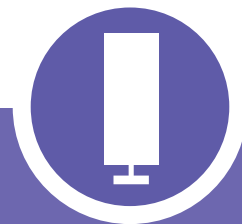
Carry bag is included.

SLIDER

Product Code: SLD
 Frame Width: 81" to 120"
 Frame Height: 41.5" to 96"

MINI SLIDER

Product Code: SLD-MINI
 Frame Width: 37.5" to 70.5"
 Frame Height: 37" to 96"



INDOOR BANNER STANDS

Indoor banner stands offer a variety of dimensions to accommodate all of your display needs. A lightweight aluminum frame and quick and easy set-up allow for a professional display in seconds.

Options



Mini Spot Light

(Color: Black or Chrome)
 Cord: 11.25 ft.
 50 Watt



EZ Tube LED Light

(Black or Silver)





GRASSHOPPER ADJUSTABLE
(STAND ONLY)
Product Code: GSM, GMD, GLG
Graphic Material: Scrim / Hybrid Vinyl

Optional Grasshopper Bag \$6.00



Small Medium/Large
Size: 6" x 44" Size: 6.5" x 55.5"



X BANNER STAND
(STAND ONLY)
Product Code: XSM, XMD, XLG
Graphic Material: Scrim / Hybrid Vinyl

Optional X Bag \$15.00



XSM XMD / XLG
Size: 5" x 33" x 2.75" Size: 5" x 44" x 2.75"



NINJA STAR DOUBLE-SIDED
(STAND ONLY)
Product Code: NIN
Graphic Material: Roll Up Fabric

Ninja Bag (Included)



Size: 50" x 4.5" x 2.5"



ZEN BAMBOO
(STAND ONLY)
Product Code: ZEN
Graphic Material: Scrim / Hybrid Vinyl

Nylon Bag (Included)



Size: 44" x 5.5"



ECONOM-X SMALL / LARGE
(STAND ONLY)
Product Code: EXSM / EXLG
Graphic Material: Scrim / Hybrid Vinyl

Nylon Bag (Included)



Size: 44" x 5.5"



L BANNER STAND 24" / 36"
24" (STAND ONLY)
36" (STAND ONLY)
Product Code: L24, L36
Graphic Material: Hybrid / Super Flat Vinyl
or Roll Up Fabric

L Banner Stand Bag (Included)



L24 L36
Size: 29" x 4.5" Size: 39" x 4.5"

CLASSIC BANNER STAND



LARGE (36 in.)
Product Code: BN3
Graphic Width: 36"
Graphic Height: 24" to 112"



Black Silver

MEDIUM (24 in.)
Product Code: BN2
Graphic Width: 24"
Graphic Height: 24" to 96"



Black Silver

SMALL (12 in.)
Product Code: BN1
Graphic Width: 12"
Graphic Height: 24" to 42"

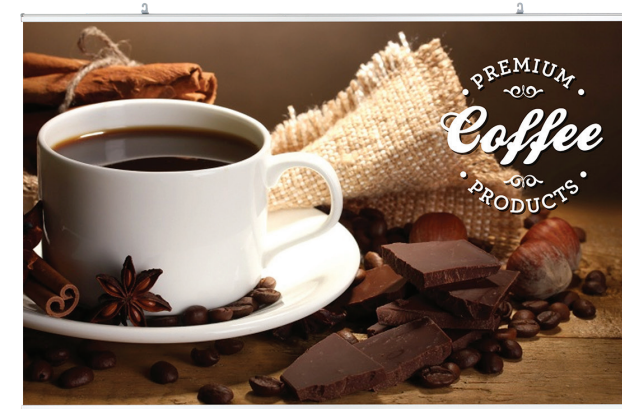


Black

PROMO STAND DOUBLE



Product Code: PM
Graphic Size: 24" W x 36" to 72"H
Graphic Material: Roll Up Fabric



MORE SIZES AVAILABLE:
3 ft., 5 ft. AND 7 ft. WIDTHS,
2 ft. TO 10 ft. HEIGHTS

Options



Travel Base
*(Medium & Large Banner only)



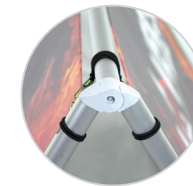
Travel Bag
Travel bag is for stand with travel
base only.



Clamp Light (for L Banner)



LED Clamp Light (for L Banner)



Frame Only

Product Code: FND-FRM
Display Size: 81.5"W x 37"H x 42"D

Single-Sided Graphic Package

Product Code: FNDG1
Graphic Material: Scrim Vinyl

Double-Sided Graphic Package

Product Code: FNDG2
Graphic Material: Scrim Vinyl

OUTDOOR BANNER STANDS



OUTDOOR BANNER STANDS

Draw brand awareness outdoors! Get a custom flag or canopy tent to easily promote your product or service in a outdoor setting! Choose from variety of shapes, sizes and bases. Flag graphics are full-color, edge-to-edge and dye-sublimated. Canopy tents are full-color, edge-to-edge and UV printed, dye-sublimated or heat pressed using a 1 or 2 color logo.



OUTDOOR BANNER WALL

Product Code: OBWG1
Display Size: 8'W x 9'H
Graphic Material: UV Tent Fabric
Includes carry bags



ZEPHYR

Product Code: ZEP
Graphic Material: Scrim Vinyl



ZEPPY

Product Code: ZPYG
Graphic Material: Scrim Vinyl



CASITA CANOPY TENTS® FULL COLOR PRINT



10 ft. UV TENT PACKAGE
 Product Code: CAS-CST10UV
 Display Size: 10'W x 10.8'H
 Graphic Material: UV Tent Fabric

- Features**
- Hexagonal legs have a 40mm girth
 - Aluminum construction weighs 43 lbs



10 ft. CASITA CANOPY STEEL
 Product Code: CASTL-CST10UV
 Display Size: 10'W x 10.8'H
 Graphic Material: UV Tent Fabric

- Features**
- Square Legs have a 28mm girth
 - Steel construction weighs 60 lbs



10 ft. CASITA CANOPY HEAVY DUTY
 Product Code: CASDLX
 Display Size: 10'W x 10.8'H
 Graphic Material: UV Tent Fabric

- Features:**
- Hexagonal legs have a 50mm girth
 - Aluminum construction weighs 65 lbs
 - Springs in frame give graphic perfect tension



5 ft. UV TENT PACKAGE
 Product Code: CASTL-CST5UV
 Frame Size: 59.75"W x 103.25"H
 Graphic Material: UV Tent Fabric



15 ft. UV TENT PACKAGE
 Product Code: CAS-CST15UV
 Display Size: 15'W x 10.8'H
 Graphic Material: UV Tent Fabric



20 ft. UV TENT PACKAGE
 Product Code: CAS-CST20UV
 Display Size: 20'W x 10.8'H
 Graphic Material: UV Tent Fabric



Leg height is adjustable.



*Graphic Package Includes: Aluminum Frame, Black Nylon Bag, Printed Canopy, and Rope & Stakes

- UV Material
- Water resistant
 - Vivid color
 - High quality finish



- Optional Flag (small)
- Flag Holder w/ Adjustable Leg

*Graphic Package Includes: Aluminum Frame, Black Nylon Bag, Printed Canopy, and Rope & Stakes
 *Backwall & Sidewall are optional.



Product Code: CAS-CST10
 Display Size: 10'W x 10.8'H
 Graphic Material: Classic Tent Fabric

Options



Travel Bag w/ Wheels



Rope & Stakes

Flag Holder



Rail for Back/Half Wall
 (Steel Canopy)
 (Regular Canopy)
 (Heavy Duty)



La Caja Case



Sand Bag



Black Nylon Bag (default)

CASITA CANOPY TENTS® STOCK COLOR

Blank (No Logo)



Product Code: CAS-STK
Canopy Material: Poly-brand

Heat Press: 1 Color Logo



Heat Press: 2 Color Logo



AVAILABLE CANOPY TOP COLORS:

- Blue PMS 286C
- Red PMS 485C
- White
- Green PMS 354C
- Black PMS 10ft ONLY

*Graphic Package Includes: Aluminum Frame, Black Nylon Bag, Canopy, and Rope & Stakes

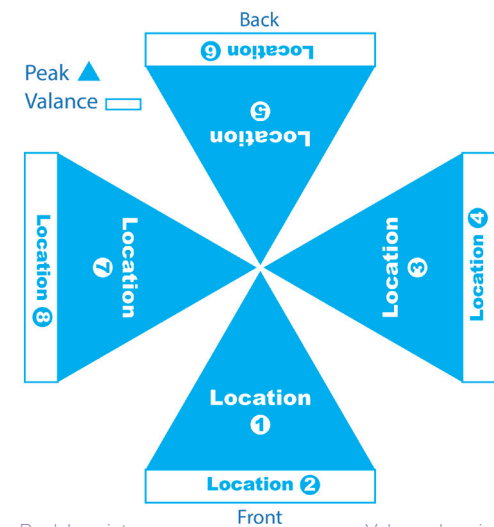
AVAILABLE LOGO COLORS:

- Blue PMS 2945C
- Dark Blue PMS 282C
- Green PMS 348C
- Dark Red PMS 201C
- Yellow PMS 124C
- Black
- White

LOGO SPECIFICATIONS:

ACCEPTABLE	UNACCEPTABLE
<p>2 COLOR LOGO</p> <p>1st</p> <p>2nd</p> <p>1 COLOR LOGO</p> <p>1st</p>	<p>GRADIENTS</p> <p>DROP SHADOWS</p> <p>MORE THAN 2 COLORS</p> <p>Servicio al Cliente</p> <p>TO COMPLEX</p> <p>AntiParticle</p>

*Logo(s) that have more than 2 colors or are too complex will not work for the Heat Press system.



Peak Imprint
52" x 28"

Valance Imprint
78" x 10"

SKYCAP UMBRELLA FULL COLOR PRINT



HEXAGON UMBRELLA

Product Code: SUHEX
Frame Size: 8' Diameter x 7.5' H
* Square base is optional.



SQUARE UMBRELLA

Product Code: SUSQR
Frame Size: 9.2' Diameter x 7.5' H
* Square base is optional.

SKYCAP UMBRELLA STOCK COLOR

Blank (No Logo)



Heat Press: 1 Color Logo



Heat Press: 2 Color Logo



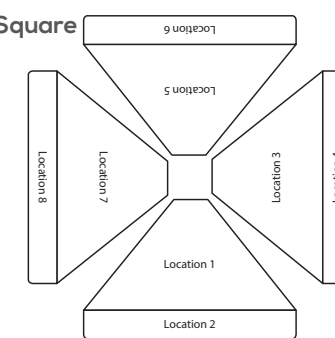
AVAILABLE UMBRELLA TOP COLORS:

- Blue PMS 286C
- Black
- Red PMS 485C
- White

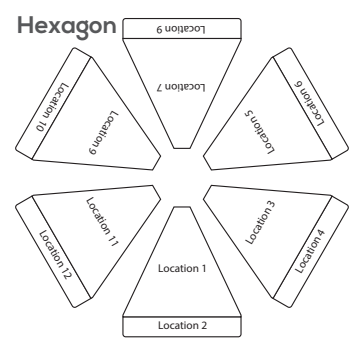
AVAILABLE LOGO COLORS:

- Blue PMS 2945C
- Dark Blue PMS 282C
- Green PMS 348C
- Dark Red PMS 201C
- Yellow PMS 124C
- Black
- White

Square



Hexagon



Valance Imprint
Square: 47" x 5"
Hexagon: 47" x 7"
Peak Imprint
Square: 25" x 17"
Hexagon: 25" x 28"

Options



Square Base for Umbrella

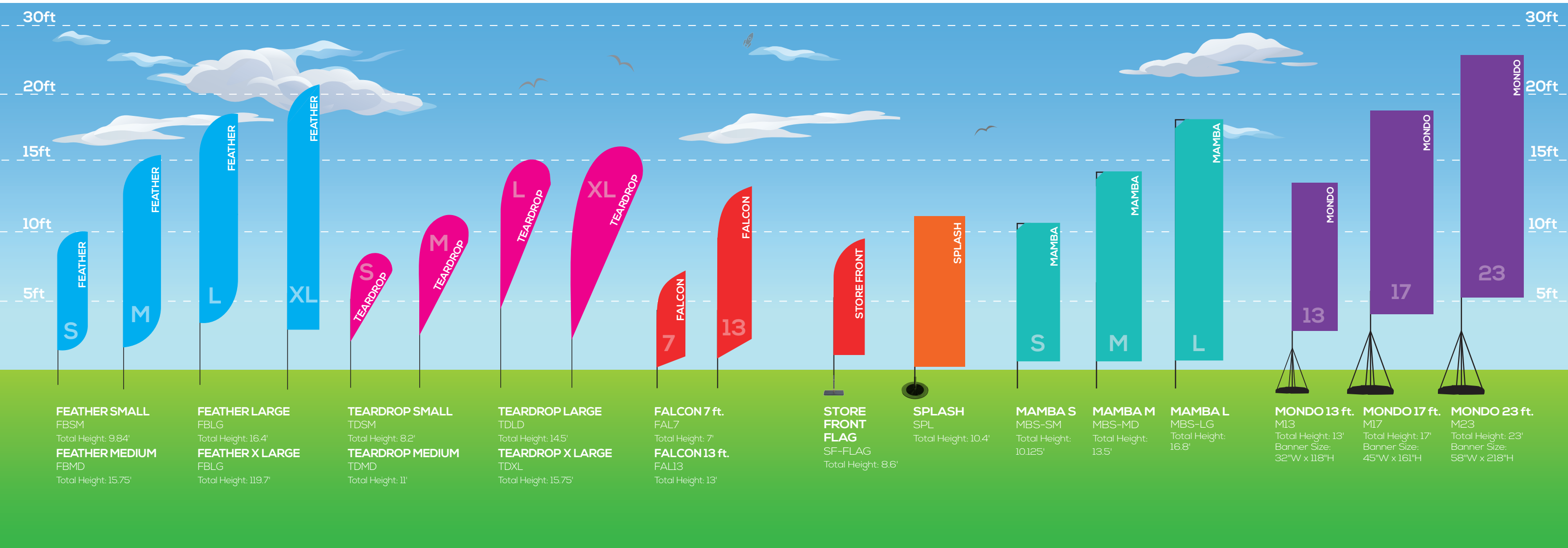


Rope (Included)

Stakes (Included)

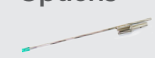


Nylon Bag is included.



Options

Spike Base
Perfect for displaying in the grass or dirt.
Price
(Feather/Teardrop)
(Falcon)



X Base
The standard X base for displaying on flat ground.
Size: Small, Medium, Large & XL
Price:



Water Bag for X Base
(Optional)



Water Base
(Optional)
For Feather, Teardrop & Mamba



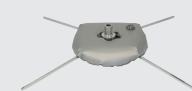
Fixed Mount Bases for Falcon
\$11.00 (Optional)



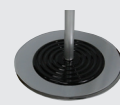
Triangle Falcon Base
For displaying in the grass or dirt for Falcon Flag.
Price:

Options

Mamba Spike Base



Mamba X Base & Water Bag



Splash Base
(Included)



Mondo Base
(Included)



Mondo Bags



Mamba Bag



Single-Sided

Image is printed on 1 side of the banner for single-sided displays. The back side shows the see-through mirror image of the front side.
Material: Mesh Fabric



Double-Sided

Two single-sided banners are sewn back to back enabling a double-sided display. A block out material is sewn between the banners to prevent light from shining through.
Material: Mesh Fabric



Frame Connection

WALLBOX 20 x 8 ft.
 Product Code: WB20x8
 Frame Size: 240" x 96" x 18"
 Weight: 45 lbs (Stand Only)



WALLBOX 8 x 10 ft.
 Product Code: WB8x10
 Frame Size: 96" x 120" x 18"
 Weight: 28 lbs (Stand Only)

WALLBOX 10 x 8 ft.
 Product Code: WB10x8
 Frame Size: 120" x 96" x 18"
 Weight: 28 lbs (Stand Only)

WALLBOX 15 x 8 ft.
 Product Code: WB15x8
 Frame Size: 180" x 96" x 18"
 Weight: 37 lbs (Stand Only)



WALLBOX DISPLAYS

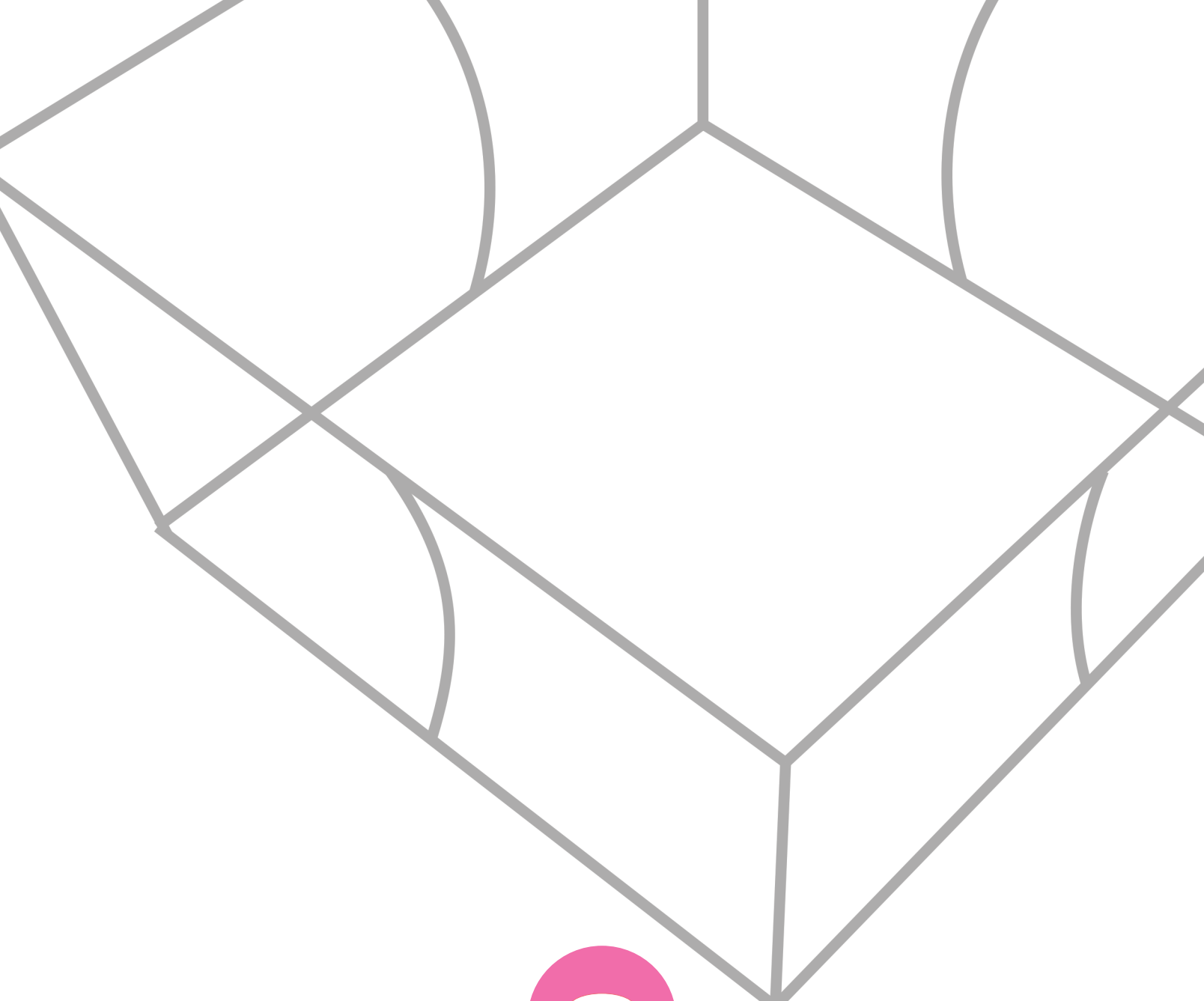
Advertise gallantly with the Wallbox fabric display, a 3-D portable unlike anything you've ever seen. Use it vertically, stretching tall like a tower, or horizontally as a barrier wall. Constructed with the same aluminum tubing as the Skybox hanging banners, set up is a snap and completely toolless! With push button snap locks, the tubes connect together. Inside, the tubes are equipped with internal bungee cords to help guide the proper connections. Fabric envelops the whole frame, and zips shut at the top, creating a soft, seamless look. Printed graphics available on front, back, and endcaps. Carry bag included.

Options

Hanging Hardware

*for 15 ft. or higher displays
 *added stabilization





HANGING BANNERS

Dude, where's your booth? Get seen from practically anywhere with the Skybox Hanging Banner above your booth. Guide exhibitors your way like the stars in the sky. American-made fabric graphics stretch and zip shut over the all-aluminum, durable frame. Styles available include circles, squares, triangles, pinwheels, etc. Height and diameter sizes vary. New larger 20 ft. diameter size now available for circle and square shapes. Includes soft carry bag.

-
-
-
-
-

CIRCLE



SQUARE



TRIANGLE



TAPERED SQUARE



CURVED SQUARE



TAPERED TRIANGLE



TAPERED CIRCLE



FOOTBALL



WAVE



PINWHEEL



Package includes:

- (1) Collapsible extruded aluminum hanging sign frame (includes curved stabilizer, quarter circle, curved connector.)
- (1) Full color zippered tension fabric graphic print
- Nylon travel bag
- Hanging cable
- Chain, spring, eye hook, large screw, hook loop lock & screw tightener



Options

- **Single-Sided:** You can choose between white or black fabric for the inner lining.
- **Double-Sided:** Additional 50% of the outside package price will be charged.

*Frame only prices and double-sided graphic prices are also available on website.

LA CAJA HARD CASE



Optional La Caja Hard Case is available for some shapes/sizes as an optional case. Check website for more details.

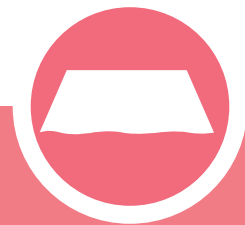


TABLE THROWS

Table Throws are a great addition to your trade show booth and are sized to fit standard 4ft, 6ft and 8ft tables. Available in full graphic prints. There are two different styles available to suit your needs. The open back version has a full-length front and side material with a shorter edge on the backside. The full back version has full length material on the front, back and both sides of the table.



Back (3-sided)



Back (4-sided)



4 ft. Standard Throw



6 ft. Standard Throw



8 ft. Standard Throw

Options



Carry Bag
*Holds 2 Table Throws.



FITTED TABLE THROW



8 ft. Fitted Throw



4 ft. Fitted Throw



6 ft. Fitted Throw

STRETCH TABLE THROW



8ft. Stretch Throw



4ft. Stretch Throw

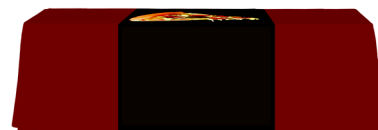


6ft. Stretch Throw

TABLE RUNNER

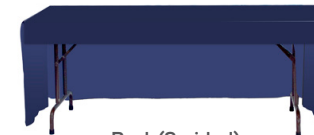


Back (Open Back)

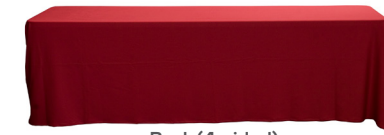


Back (Full Back)

TABLE THROW STOCK COLOR



Back (3-sided)



Back (4-sided)



Imprinted area
52 in. x 28 in.

AVAILABLE TABLE THROW COLORS:

-  Blue PMS 286C
-  Yellow PMS 1235C
-  Lime Green PMS 354C
-  Hunter Green PMS 350C
-  Burgundy PMS 202C
-  Gray PMS 428C
-  Black
-  White

AVAILABLE LOGO COLORS:

-  Blue PMS 2945C
-  Dark Blue PMS 282C
-  Green PMS 348C
-  Dark Red PMS 201C
-  Yellow PMS 124C
-  Black
-  White

LOGO SPECIFICATIONS:

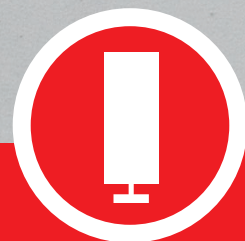
ACCEPTABLE	UNACCEPTABLE
<p>1st</p> <p>2 COLOR LOGO</p>  <p>2nd</p> <p>1 COLOR LOGO</p> 	<p>GRADIENTS</p>  <p>DROP SHADOWS</p> <p>MORE THAN 2 COLORS</p>  <p>TO COMPLEX</p>  <p>AntiParticle</p>

*Logo(s) that have more than 2 colors or are too complex will not work for the Heat Press system.

Options



Carry Bag
*Holds 2 Table Throws.



DISPLAY STANDS

Looking for an interactive attraction? Engage others with the brand new Jotter Tablet Display—a great tool for trade shows, office lobbies, or retail! The Jotter stand has a pivotal head, allowing you to rotate the tablet 360° and adjust the angle 135°. Simply insert the tablet and use the key to lock the case. The tablet is snug, secure and ready to use. The case allows for a working front and back camera as well. Use them anywhere you want to be hands-free. The Jotter Tabletop Tablet Display can be used to customize any display or countertop. To mount, simply drill into desired tabletop or display, and voila! Compatible with 2nd, 3rd and 4th generation iPad tablets. Available in 3 styles. Choose from Black or White.



JOTTER TABLET STAND A
(STAND ONLY)
Product Code: JTS-A



JOTTER TABLET STAND B
(STAND ONLY)
Product Code: JTS-B



JOTTER TABLET TABLETOP
(STAND ONLY)
Product Code: JTS-C



JOTTER Brochure Holder
Product Code: JTS-BH



JOTTER Back Banner
Product Code: JTS-ABBA

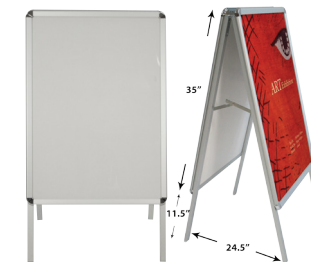
IS-1
(STAND ONLY)
Product Code: IS1
Base Size: 10"W x 14"H



IS-2
(STAND ONLY)
Product Code: IS2
Frame Height: 60"H



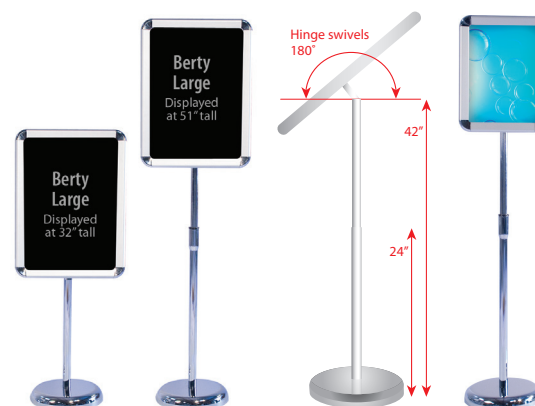
ALUMINUM SNAP FRAME
(STAND ONLY)
Product Code: ASF
Frame Size: 25.5"W x 46.5"H



SPRING SNAP FRAME
(STAND ONLY)
Product Code: SSF
Frame Size: 32"W x 46.5"H x 20"D



BERTY SNAP FRAME
(STAND ONLY)
Product Code: BSFSM
(STAND ONLY)
Product Code: BSFLG



WATER BASE SNAP FRAME
(STAND ONLY)
Product Code: WBSF
Frame Size: 32"W x 46.5"H x 20"D



LITERATURE STANDS

EZ FROST SINGLE

Product Code: LIT-EZF1
 Dual Height Options: 50.5" and 59"
 Base Size: 10.5"W x 14"D
 Display Area: 9"W x 12.25"H
 Case Size: 19"W x 13"H x 7.5"D



Includes deluxe hard case

EZ FROST DOUBLE

Product Code: LIT-EZF2
 Dual Height Options: 50.5" and 59"
 Base Size: 17.5"W x 14"D
 Display Area: 16.5"W x 12"H
 Case Size: 21"W x 17.5"H x 6.75"D



Includes deluxe hard case

MESH SINGLE

Product Code: LIT-MESH1
 Display Size: 11.25"W x 45"H



MESH DOUBLE

Product Code: LIT-MESH2
 Display Size: 20.25"W x 45"H



5 STEPS

Product Code: LIT-5STEP
 Display Size: 9"W x 56"H
 Collapsed Size: 9"W x 11 1/2"L x 13"H



Includes deluxe hard case

MESA

Product Code: LIT-MESA
 Table Size: 20.25"W x 14.5"D
 Stand Height: 39"
 Base Size: 14.5"W x 10"D



Includes deluxe hard case

CASES & BAGS

LA CAJA HARD CASE w/ Wheels & Handle

Product Code: LACAJA
 Outside Dimensions: 18"x 67"x 11.5"
 Inside Dimensions: 16.9" x 64.6" x 10.6"
 Weight: 21 lbs



Application:

- * Casita Canopy
- * Mammoth
- * Hanging Banners (some of the sizes/shapes)

LA CAJA HARD CASE (SMALL) w/ Wheels & Handle

Product Code: LACAJAS
 Outside Dimensions 53" x 16.9" x 10.6"
 Inside Dimensions 52.4" x 16" x 10.6"
 Weight: 13 lbs



Application:

- * Resort Extrusions,
- * Retractable Stands (some of the sizes/shapes)

SILVER BAG 24 in.

Product Code: SBAG24
 Dimensions:
 28.5"W x 12"H x 4"D
 Weight: 5 lbs



SILVER BAG 33.5 in.

Product Code: SBAG335
 Dimensions:
 37"W x 12"H x 4"D
 Weight: 6 lbs



SILVER BAG 36 in.

Product Code: SBAG36
 Dimensions:
 41"W x 12"H x 4"D
 Weight: 6 lbs



SILVER BAG 48 in.

Product Code: SBAG48
 Dimensions:
 51.5"W x 12"H x 4"D
 Weight: 7 lbs



SILVER BAG 60 in. w/ Wheels

Product Code: SBAG60
 Dimensions:
 64"W x 12"H x 4"D
 Weight: 9 lbs



GRASSHOPPER BAG

Small

Product Code: G-BAGSM
 Dimensions: 44"W x 6"H
 Weight: 2 lbs



Medium/Large

Product Code: G-BAGMDLG
 Dimensions: 55.5"W x 6.5"H
 Weight: 2 lbs



X-BAG

XSM

Dimensions: 36"W x 4"H x 4"D
 Weight: 3 lbs



XMD & XLG

Dimensions: 48"W x 4"H x 4"D
 Weight: 3 lbs



PODIUM CASE

Product Code: PU-POD
 Outside Dimensions:
 27.5"W x 39"H x 15.75"D
 Inside Dimensions:
 25"W x 31.75"H x 14.25"D
 Weight: 31 lbs



Application:

- * Pop Up Display
- * Optional Graphic Wrap is available.

MEDIUM HARD CASE

Product Code: MHC
 Outside Dimensions:
 22"W x 39"H x 17"D
 Inside Dimensions:
 20.5"W x 32.5"H x 12"D
 Weight: 31 lbs



Application:

- * Ready Pop Fabric Pop Up (Medium/Large)
- * Optional Graphic Wrap is available.

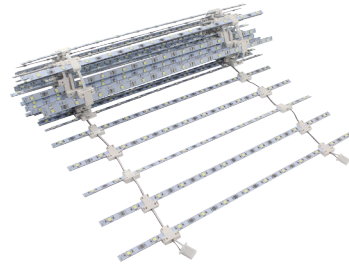
LIGHTS

LADDER LIGHT

Product Code: RESORT-LDLTS

Application:

- * Mammoth
- * Vail-60S / 100D / 120D / 120DB



Transformer

ASPEN LED LARGE LIGHT

Product Code: AF-LIGHTLG
Dimensions: 6" x 6" x 24"
Weight: 2 lbs

Application:

- * Aspen Fabric Frame



ASPEN SMALL LIGHT

Product Code: AF-LIGHTSM
Dimensions: 4" x 4" x 20"
Weight: 2 lbs

Application:

- * Aspen Fabric Frame



T135 LED LIGHT

Product Code: T135
Weight: 2 lbs

Application:

- * Pop Up Display
- * Fabric Pop Up Display
- * Tahoe Modular Display
- * Aspen Fabric Frame



POP UP LED LIGHT

Product Code: PU-LEDLIGHT
Shipping Dimensions: 6" x 6" x 24"
Weight: 2 lbs

Application:

- * Pop Up Display



READY POP LED LIGHT

Product Code: RP-LEDLIGHT
Shipping Dimensions: 6" x 6" x 24"
Weight: 2 lbs

Application:

- * Fabric Pop Up Display



EZ TUBE LED LIGHT

Product Code: EZT-LEDLIGHT
Shipping Dimensions: 6" x 6" x 24"
Weight: 3 lbs

Application:

- * EZ Tube Display



CLAMP LIGHT

Product Code: CLIGHT
Dimensions: 6" x 6" x 24"
Weight: 2 lbs

Application:

- * Retractable Banner Stand
- * L Banner Stand



CLAMP LED LIGHT

Product Code: CLEDLIGHT
Dimensions: 6" x 6" x 24"
Weight: 2 lbs

Application:

- * Retractable Banner Stand
- * L Banner Stand



VEGAS LIGHT

Product Code: VLIGHT
Dimensions: 4" x 4" x 20"
Weight: 2 lbs

Application:

- * Pop Up Displays
- * Ready Pop Fabric Display



SILVER LIGHT

Product Code: SLIGHT
Cord: 8.6 ft.
50W
Dimensions: 4" x 4" x 20"
Weight: 2 lbs

Application:

- * Retractable Banner Stand



BLACK LIGHT

Product Code: BLIGHT
Cord: 8.6 ft.
50W
Dimensions: 4" x 4" x 20"
Weight: 2 lbs

Application:

- * Retractable Banner Stand



RESORT LIGHT STRIP

Product Code: RESORT-LS

Application:

- * Mammoth
- * Whistler
- * Vail-60S / 100D / 120D / 120DB



PRINTING SERVICES

DIGITAL PRINTING COLOR INFORMATION

OFFSET VS. DIGITAL

Digital printing offers a shorter turnaround and more consistent end results than offset printing. Digital printers do not print PMS and RGB colors. These colors will have color shifts.

PMS (SPOT COLOR) MATCHING

Although digital printers do not print PMS colors, our production team will manually adjust the color output to match your spot colors upon request (per color/material). Please ask us about our PMS Color Matching service when you upload your files.



FINISHING OPTIONS



GROMMET

Banner edges are hemmed with #2 grommets in corners.
* Available grommet colors: brass, silver & black.



HEM

Banner edges are folded over and stitched with white thread.



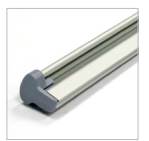
POLE POCKET

The top and/or bottom of the banner is folded over and sewn, creating a pocket that accepts dowels.



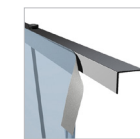
CLAMP

Top and/or bottom bars clamp to banner.



HOOK & LOOP

Banners attach via hook & loop strips on top and/or bottom.



MAGNET

Magnetic strips on sides of panels attach to channel bars on frame.



PRINTING METHODS

THERMAL TRANSFER (HEAT PRESS)

Our thermal transfers allow 1 to 2 color images to be applied to our stock table throw and stock casita canopy products. Using thermal transfer vinyl, we die-cut and weed your image, then apply it to the stock product using a high temperature, large format heat press.

Used for: Casita Canopy Stock, Table Throw Stock, Skycap Umbrella Stock

DIGITAL INKJET LAMINATED PRINTING

Using a high resolution, 4-color process, we are able to output images up to 1080dpi onto titanium film media. Once this entire image is printed, we overlay laminate—using a cold-process laminator—for durability.

Used for: Laminated Display Film, Pop Up Wave Display

UV PRINTING

Using the 4-color process (plus light cyan and light magenta), we create weather resistant images for outdoor graphics using ultraviolet curable inks.

Used for: UV Hybrid Vinyl, UV Super Flat Vinyl, Scrim Vinyl, UV Casita Canopy, UV Backlit, PVC

DYE-SUBLIMATION

The direct-to-fabric printing process applies the ink directly to the fabric using the 4-color process. The print then goes through the sublimation process of heat-plus-time to create beautiful, photo images.

Used for: All Fabric (except UV Fabrics)

